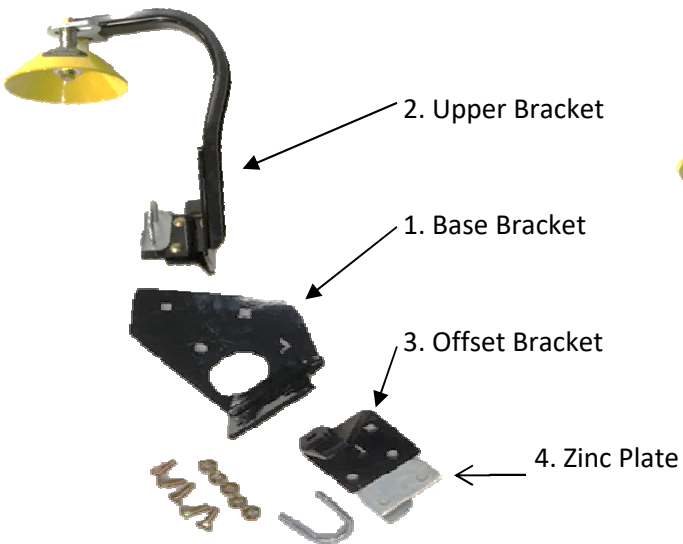




Bourgault XTC--PLX Instructions

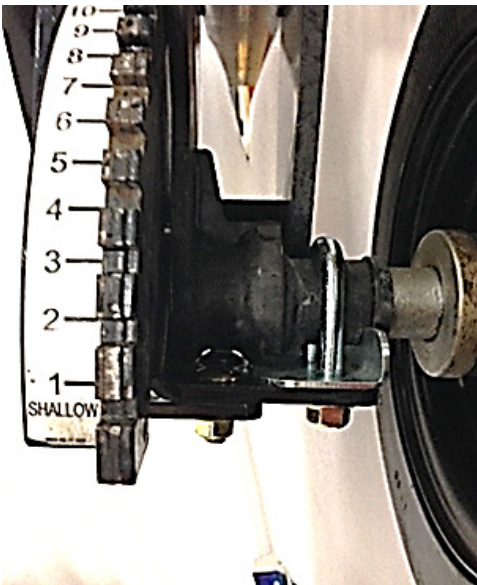
www.rotomudscrapers.com



Step One:

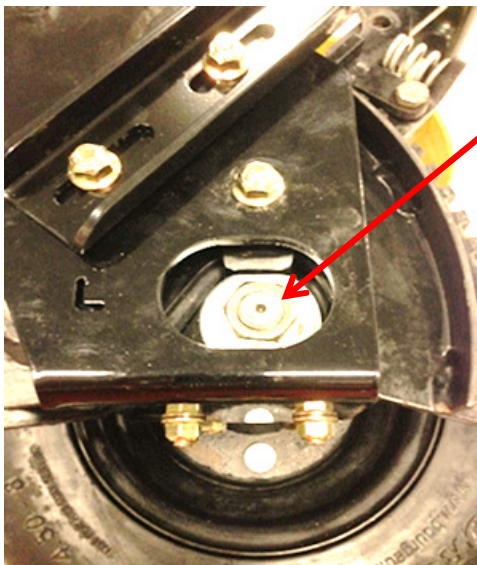
Bolt the offset bracket (3) to the base bracket (1), and tighten.

Bolt upper bracket to the base bracket and snug the bolts but do not tighten at this point



Step Two:

Remove the 3/4" nut on the axle and place the base bracket (1) over the axle bolt. Replace the 3/4" nut loosely and do not tighten at this point. Place the zinc plate (4) under the cast axle. Put the U-bolt over the cast axle, and through zinc plate (4) and through the offset bracket (3). Pull the scraper towards the back of the seeder so that the front of the base bracket is tight to the bottom of the cast axle, then tighten the U bolt.



Step Three:

Tighten 3/4" axle nut.



www.rotomudscrapers.com



Step Four:

Adjust scraper 1/8" from tire and tighten 3/8" nuts on upper bracket (4).



Step Five:

Slide the scraper in the slot so that it is offset minimum 3/4" from the edge of the tire on a 4" wide tire like this one.