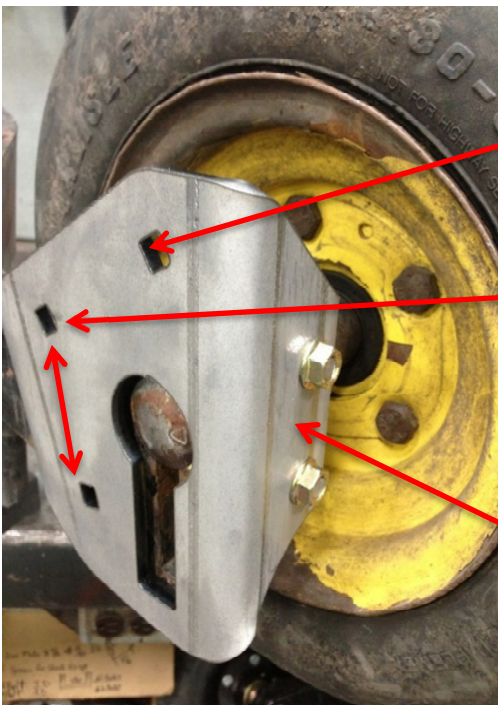




Seed Hawk Econo Arm with 9" Bolt

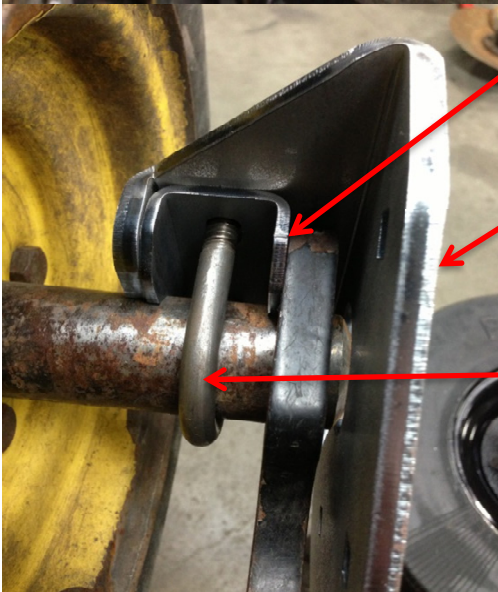
www.rotomudscrapers.com



There are two positions to mount the upper bracket to the base bracket. This is determined by the angle you need in order to have the scraper miss the frame

3/8 carriage bolt should be mounted in place before the base bracket is mounted on the opener arm. If it is not put on ahead, it will be hard to get the bolt in later.

Make sure the back of the base bracket is parallel to the back of Seed Hawks opener arm before tightening the ubolt. There should be approximately 1/16 space between.



(Zinc Saddle) Place the zinc saddle loosley against Seed Hawks opener arm

(Base Bracket)

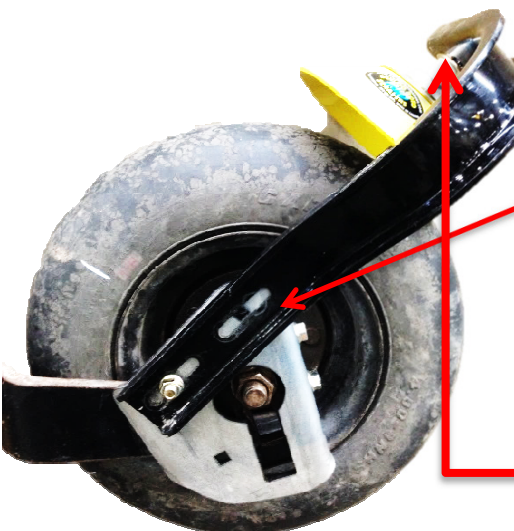
(Round Ubolt) Put the Ubolt through zinc plate and base bracket together



Seed Hawk Econo Arm with 9" Bolt

www.rotomudscrapers.com

This is an example of the scraper in the rear position, it would have to be in the forward position in order to miss the frame on the back row of the seeder



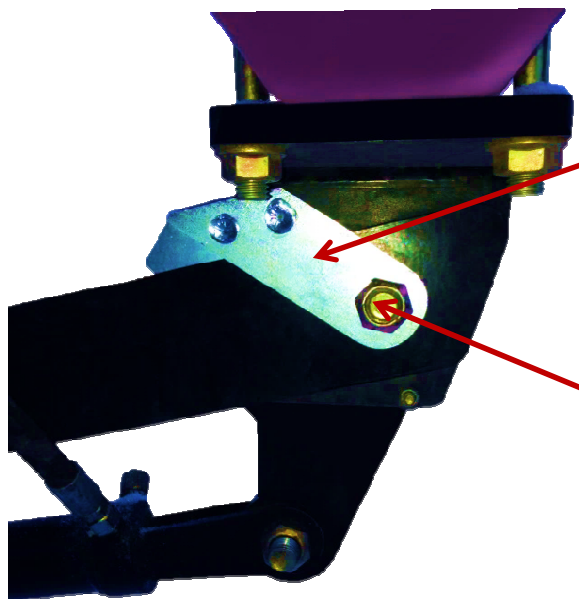
Mount upper bracket to base bracket with 3/8 carriage bolts provided
There are two settings for placement of the scraper. Use the lower two wholes only where needed to position the scraper forward to avoid the frame on the back row or any other area where the scraper may contact the frame or the hoses.

Picture above should also have this angle bracket with slot



Use a straight edge (Carpenters Square) and adjust the scraper in the slot so that the scraper is at 3/4" minimum from the side of the tire.

Adjust the scraper so that it has approximately 1/8" space between the tire.



If there are spots on the seeder that the scraper will still hit the frame or hoses, we use this zinc stopper to stop the opener from coming all the way up.

Mount the stopper on the bolt that holds the opener onto the seeder frame. This stopper will stop the arm from coming up to max height, giving more clearance for the scraper.