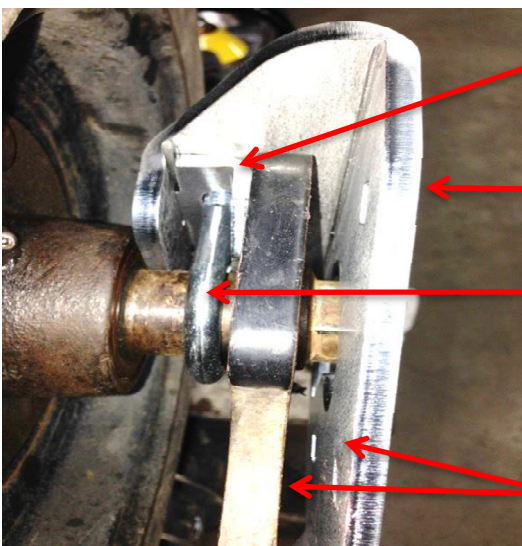




SEEDHAWK ECONO SPINDLE INSTRUCTIONS

www.rotomudscrapers.com

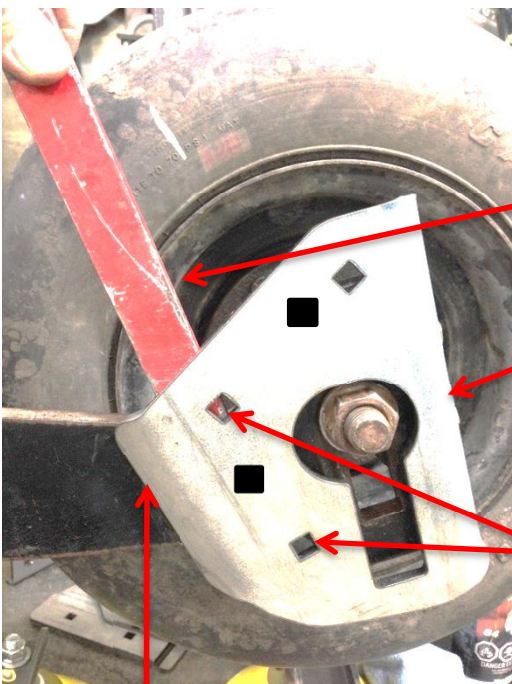


(Zinc Plate) Place the zinc plate with tabs into the slots on the large base plate

(Base Plate) Place zinc plate and base plate against spindle and put Ubolt through holes and install nuts

(Round Ubolt) Tighten the Ubolt once base plate is placed $\frac{3}{8}$ " away from Seed Hawk opener arm. The zinc plate should be snug against the Seed Hawk opener arm, and the back side of the opener arm should be parallel to the inside of the base bracket.

$\frac{3}{8}$ " between these two points



Use pry bar to bend bracket away if it touches Seed Hawk opener arm.

Try to keep the Base bracket parallel to the square end of the seed hawk opener arm.

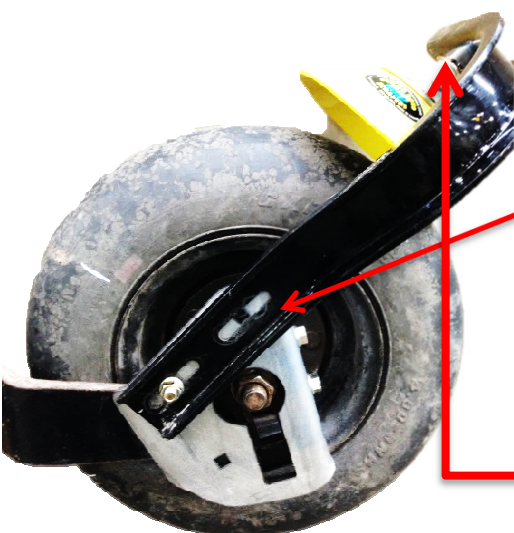
Only use this angle if necessary to miss the frame or big hoses. Otherwise use the laid back position

We would like to keep approximetaly $\frac{1}{32}$ " between base bracket and opener arm



SEEDHAWK ECONO SPINDLE INSTRUCTIONS

www.rotomudscrapers.com



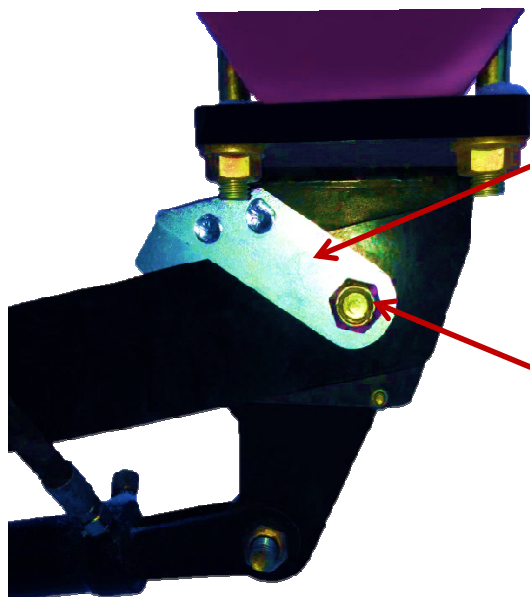
Mount upper bracket to base bracket with 3/8 carriage bolts provided
There are two settings for placement of the scraper. Use the lower two holes only where needed to position the scraper forward to avoid the frame on the back row or any other area where the scraper may contact the frame or the hoses.

Picture above should also have this angle bracket with slot



Use a straight edge (Carpenters Square) and adjust the scraper in the slot so that the scraper is at 3/4" minimum from the side of the tire.

Adjust the scraper so that it has approximately 1/8" space between the tire.



If there are spots on the seeder that the scraper will still hit the frame or hoses, we use this zinc stopper to stop the opener from coming all the way up.

Mount the stopper on the bolt that holds the opener onto the seeder frame. This stopper will stop the arm from coming up to max height, giving more clearance for the scraper.